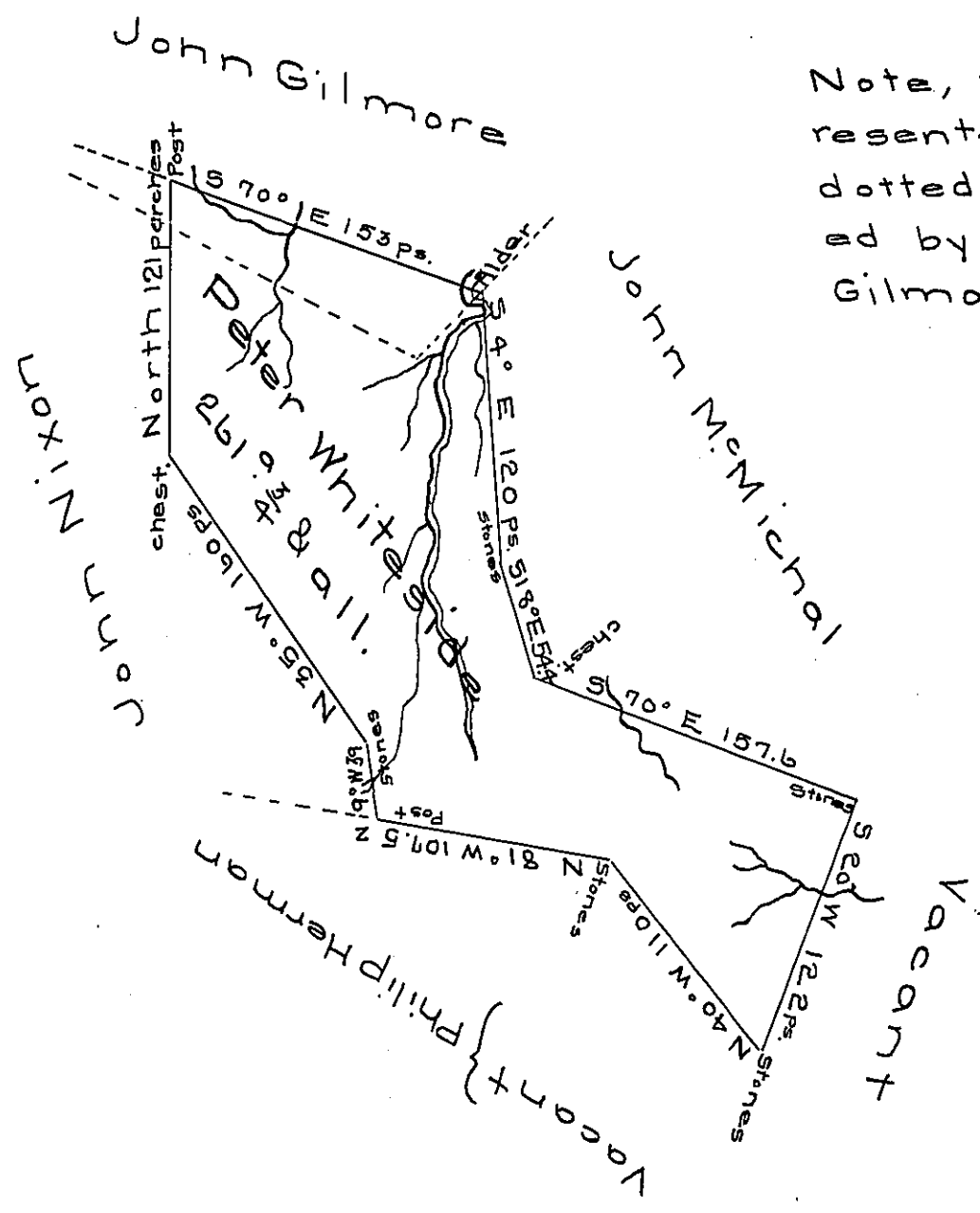


FORM NO 1.



Note, that part represented by the dotted line is disputed by James Gilmore.

Situated on a branch of Coxes Creek on the South side of the Glade Road in Milford township Bedford County and surveyed the 26th day of May 1786. In pursuance of a warrant dated the 1st day of July 1784.

Alexander McClean Dep.

To John Lukens Esquire
Surveyor General

IN TESTIMONY that the above is a copy of the original remaining on file in the Department of Internal Affairs of Pennsylvania, made conformably to an Act of Assembly approved the 16th day of February, 1833, I have hereunto set my Hand and caused the Seal of said Department to be affixed at Harrisburg, this twenty-sixth day of April 1907.

Isaac B. Brown
Secretary of Internal Affairs.